



T3 INCINERATOR MANUAL

**ISSUE NO. 4
2006**

T3 INCINERATOR

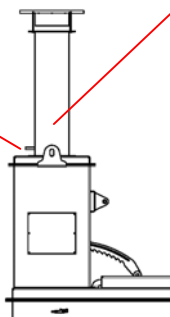
Thank you for choosing our incinerator please read the following carefully.

ASSEMBLY

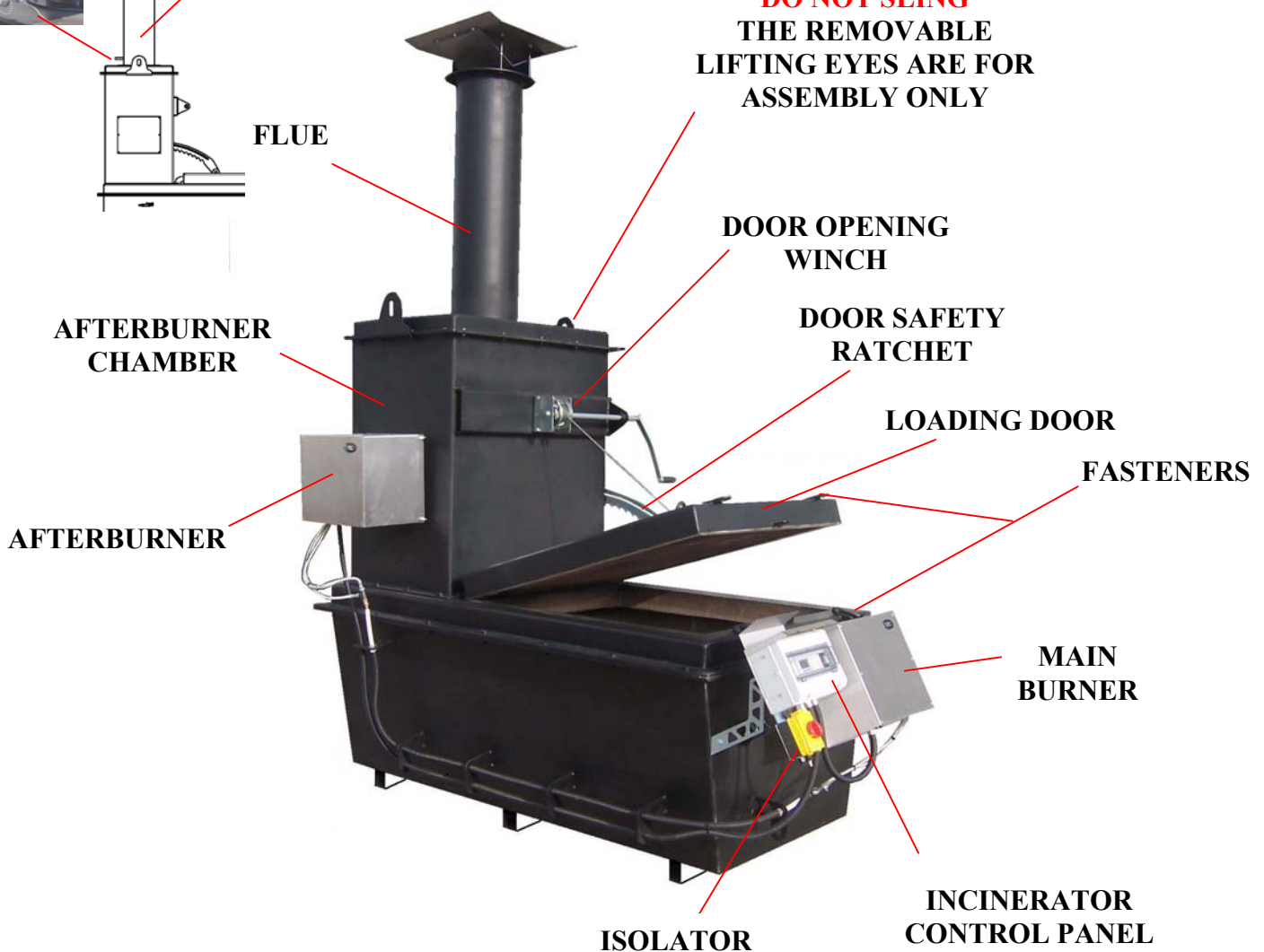
The incinerator is delivered with **FLUE** removed.

- Place incinerator in desired position, using a **FORKLIFT** and taking care not to damage any surrounding pipe work.
- Assemble **FLUE** by removing nuts on top of **AFTERBURNER**, then lift to position ensuring correct position as indicated in diagram below. Replace nuts and tighten.

- Insert Thermocouple fully into Thermocouple Tube as indicated and lock in position using screw.



WARNING
DO NOT SLING
THE REMOVABLE
LIFTING EYES ARE FOR
ASSEMBLY ONLY



T3 INCINERATOR

INSTALLATION

Note: purchaser must have Oil and Electrical supply connected before Incinerator is commissioned.

- **CONNECTING OIL SUPPLY**

Connect oil supply at point indicated below using 10 mm. Diameter Pipe.

A KBB valve and filter must be fitted in the oil supply line.

Fuel: Kerosene 28 second.

We recommend tank should be 900 mm. / 1000 mm. above ground level and 6 Metres from incinerator except when using a firewall.

- **ELECTRICAL SUPPLY**

The electrical supply to the incinerator is connected to the isolator 230/240Vac (See wiring diagram on page 8)

CONTROL PANEL



ISOLATOR

OIL CONNECTION

T3 INCINERATOR

USER INSTRUCTIONS

LOADING

- To open **LOADING DOOR** unscrew **DOOR FASTENERS**

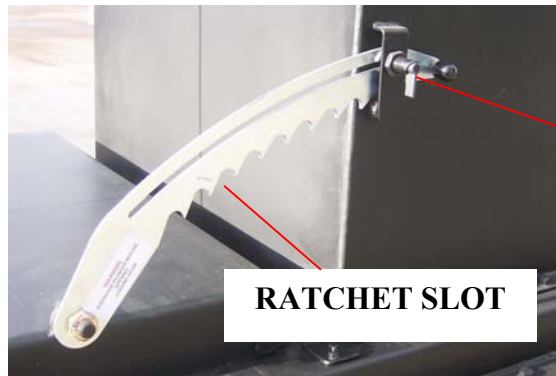
WARNING Before opening **LOADING DOOR** please ensure **SAFETY RATCHET PLUNGER** is disengaged allowing the ratchet to operate.

- Turn handle of **WINCH** in a clockwise direction until door is fully open.

Fill incinerator with material to be burnt never overfill. (See diagram below)

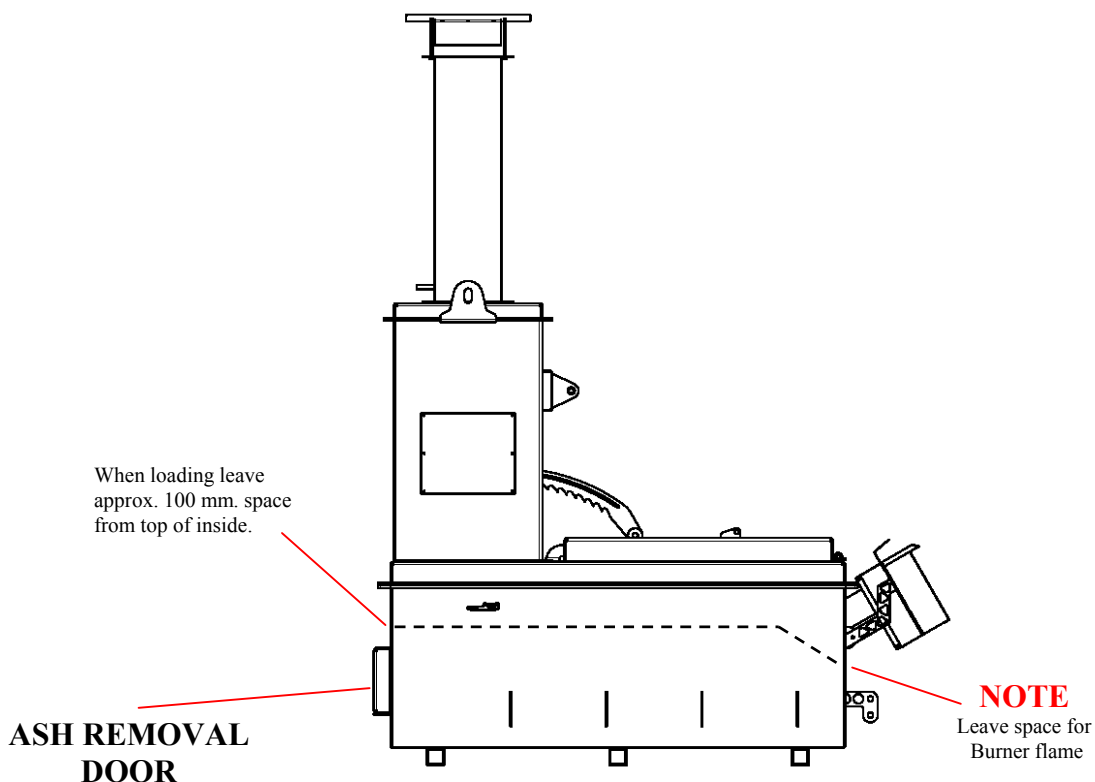
- To close door engage **SAFETY RATCHET PLUNGER** by lifting ratchet and inserting plunger pin into ratchet slot. Turn **WINCH HANDLE** anti clockwise until door is fully closed.
- Fully tighten **DOOR FASTENERS**.

WARNING During operation do not touch surfaces, as they may be **HOT**.



**SAFETY RATCHET
PLUNGER**

RATCHET SLOT



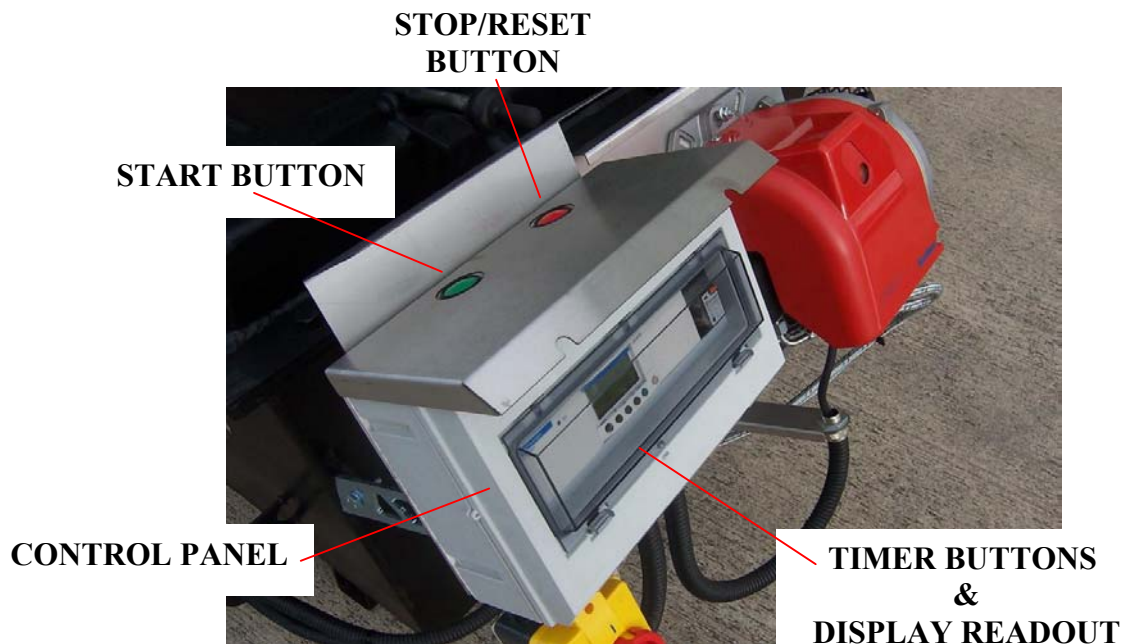
T3 INCINERATOR

SWITCHING INCINERATOR ON

- To start incineration turn **ISOLATOR** on and press the **STOP/RESET BUTTON**.
- Press **START BUTTON** as indicated on **CONTROL PANEL**. (These may be on top or side of **CONTROL PANEL**)

This will allow the following procedure:

1. Afterburner will fire until reaching 850°C
2. The Main Burner will then fire.
3. Both burners are programmed to burn for 8½ hours.
4. Both burner fans will run for a further 2 hours after burn is complete.
This will allow the incinerator to cool down.



NOTE

Under normal operation the **TIMER BUTTONS** should not be pressed except under manufacturers instructions.
Refer to page 7 for (Timer Settings Explained)

SWITCHING INCINERATOR OFF

The incinerator will switch off automatically at end of the cycle.

WARNING Pressing **STOP/RESET BUTTON** will stop the incineration cycle leaving ready for new start. If there is not an immediate restart this would be similar to a power failure, which could damage the burners in order to prevent this the burners, may need removing.

T3 INCINERATOR

BURNER LOCKOUT

The burners have an independent control system (burner control box) this includes a flame detector (photocell) which senses the presence of a flame. In the event of flame failure the burner control box activates a second re-ignition sequence. Should the photocell not detect a flame presence within 15 seconds the burner goes to LOCKOUT and shuts down.

Continued LOCKOUTS are a result of a fault and can be attributed to the following examples:

- An interruption of fuel supplies e.g. run out of fuel (to restart bleed both burners)
- Electrical supply fault e.g. extreme low voltage.
- Failure of a burner component.
- A fault within the control system.

The burner-reset button on the burner control box illuminates to indicate that a lockout has occurred. In the event of the burner locking out do not attempt to restart by pressing the reset button on the burner control box for at least 2 minutes.

RESTARTING AFTER LOCKOUT

When lockout has occurred before restart inspect for any obvious causes e.g. oil leaks. Also check the fuel line from the tank to the incinerator and that any oil shut off valves has not been inadvertently closed.

- Press the illuminated reset button that will go out and the burner will commence the ignition start sequence. After 15 seconds the burner should fire normally. **Note:** should the burner not start the burner-reset button will illuminate again.
- Wait at least 2 minutes and depress the reset button again. Failure to start after 3 or 4 times indicates a fault requiring attention.

In the event of a failure to start:

- Switch off electrical supply.
- Call service engineer.

RESET BUTTON

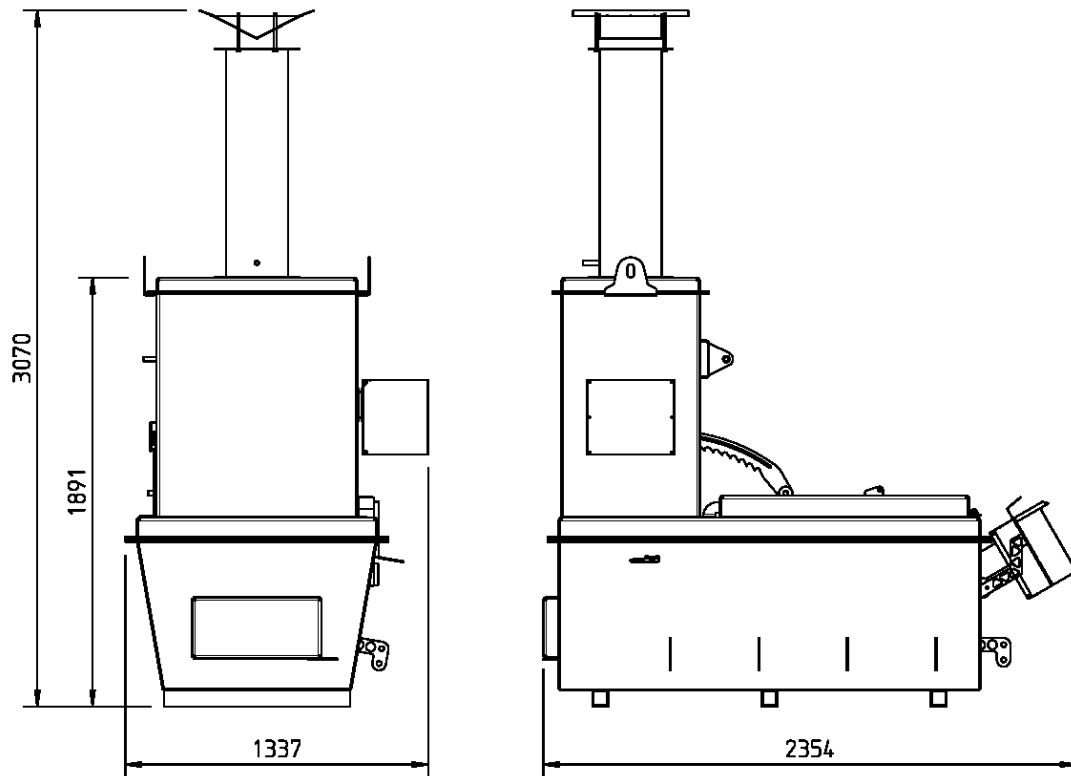
Will illuminate when the burner has failed to fire.



T3 INCINERATOR

SPECIFICATION

WEIGHT (kg)	LOAD CAPACITY (kg)	BURN CYCLE (hours)	OIL USAGE (litres/hr)	VOLUME (M ³)
1760	400	8½	Approx 8	0.87

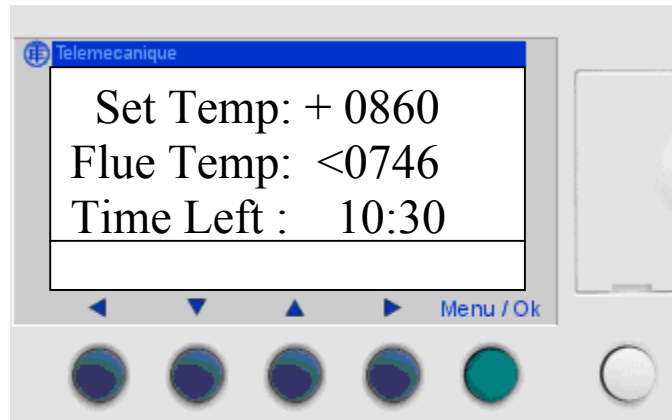


WARNING

The incinerator is refractory lined.
DO NOT USE if the refractory becomes damaged exposing steel as it will cause irreparable damage to the incinerator. Make sure refractory is repaired before operating again.

T3 INCINERATOR

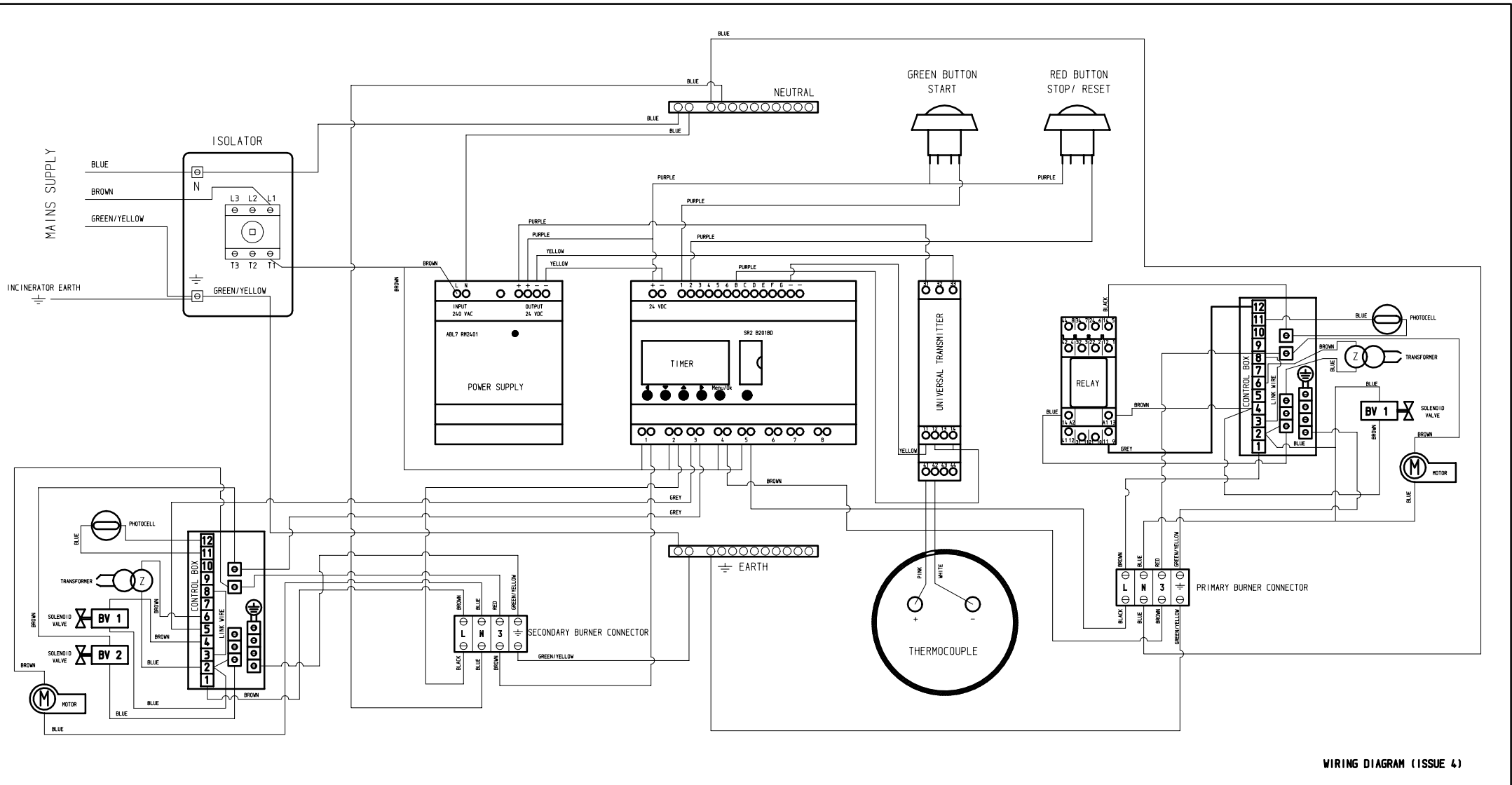
TIMER SETTINGS EXPLAINED



- Set Temp: shows the flue gas temperature the burners have to maintain. The MAIN BURNER will switch on/off within +/- 10°C (Note: can be adjusted by means of scrolling up▲ or down ▼using the appropriate key) this should only be done under manufacturers instructions.
- Flue Temp: shows the temperature of the flue gas at any given time, the MAIN BURNER will switch on when 850°C is achieved.
- Time Left: This shows remaining time of incineration and cool down period.

INCINERATOR COMMISSIONING

A TURKINGTON ENGINEERING approved engineer before use must commission this machine.



WIRING DIAGRAM (ISSUE 4)

TURKINGTON ENGINEERING LIMITED
14 Tullylagan Road, Sandholes, Co. Tyrone BT80 9AZ
Telephone: 028 867 63372 Fax: 028 867 63484
Email: info@turco.co.uk

Copyright of the contents of this manual is secured by Turkington Engineering Limited and neither the manual nor any part may be reproduced without permission.
Turkington Engineering Limited have a continuing research and development programme which occasionally necessitates changes to specifications herein.
It is, therefore essential that instructions issued with each individual appliance are carefully read prior to installation and strictly adhered to during installation.
The statutory rights of the customer are not affected.