

Rega Univac Central Vacuum Installation

Your Rega Univac central vacuum cleaning system consists of the following units:

Central Vacuum unit.

With motor, fan, dust collector, control unit, suction connection and exhaust air connection. The central unit also includes connections for the mains power supply and for the 24 V signal cable. The central unit has two input holes, either of which can be used for connecting the suction pipe. The unused hole should be blanked off with the plastic plug supplied. The wall mounting bracket is designed for two screw fixing.

Permanently installed suction air system.

This consists of flexible hoses with smooth inside surfaces.

The hoses have an inside diameter of 42 mm and an outside diameter of 48 mm. They are intended for running from central unit to the suction inlets located at various places in the house. A two-core signal cable for 24v current should be run in parallel with the suction hoses. The function of the cable is to carry the current that energizes a relay which starts the vacuum cleaning motor when the hose mounted on/off switch is operated. This takes place by a pair of contacts closing when the vacuum cleaning hose is plugged into the suction inlet. This ensures that the motor will run only when the system is being used. It also ensures that the system is totally childproof.

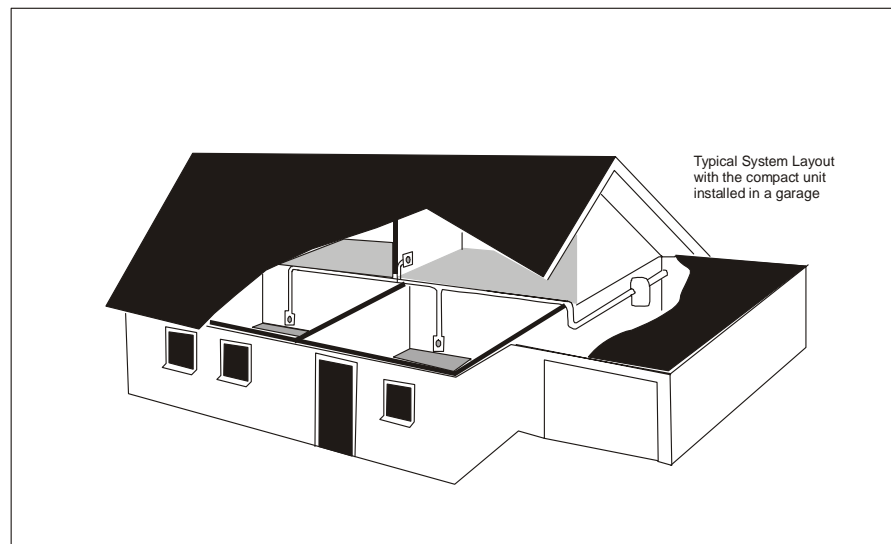
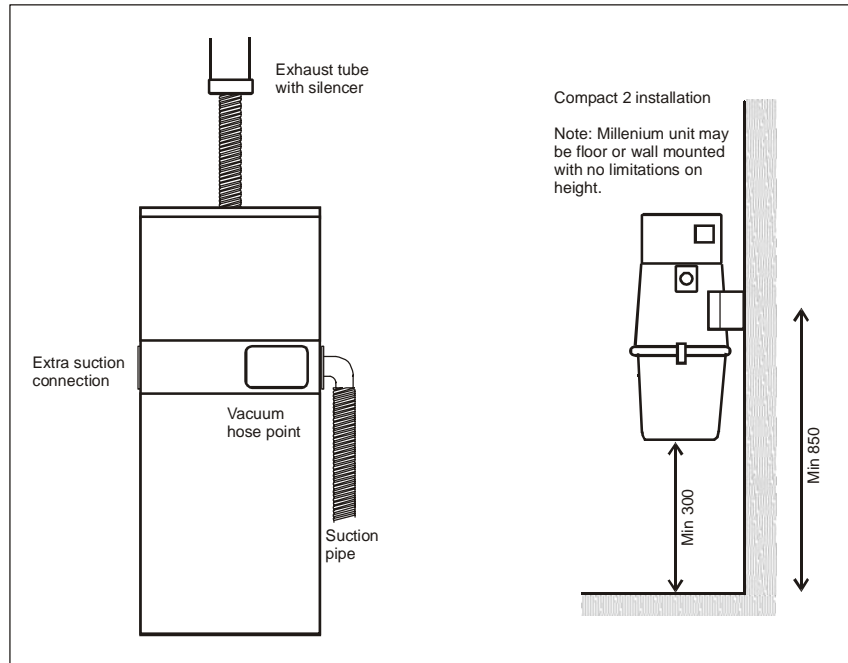
The permanently installed system also includes the exhaust hose which discharges the exhaust air. The discharge is via a silencer which prevents noise nuisance outside the dwelling.

Cleaning equipment.

This consists of various nozzles, an adjustable telescopic tube with on/off switch, and a vacuum cleaning hose with handle and connector for the suction inlet. The equipment also includes a practical hanger for convenient storage of the hose.

Planning

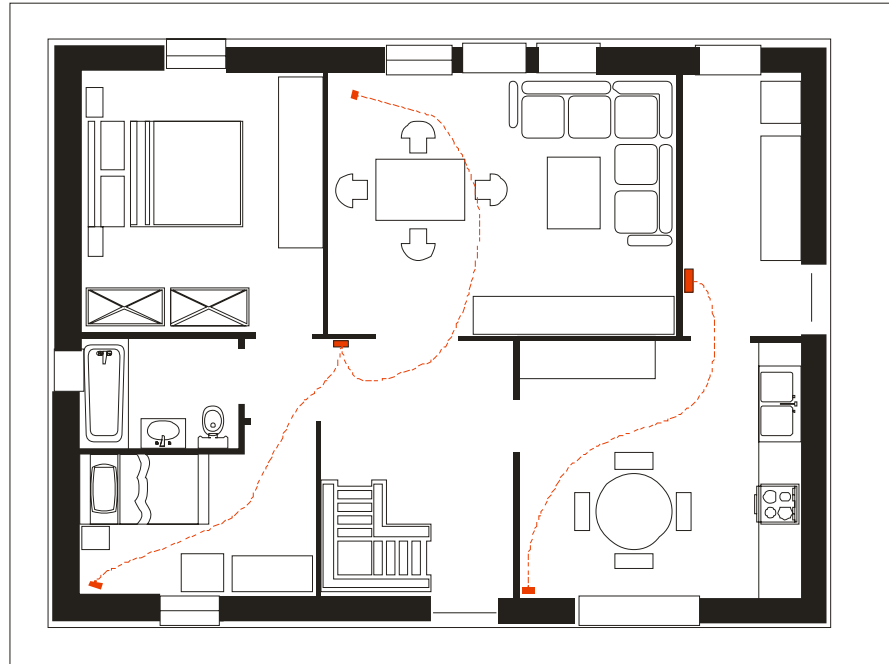
The installation of the central vacuum cleaning system is often planned as part of the overall house design. This enables the owner to study the drawings and layout (and sometimes also the proposed furniture arrangement) at his leisure. But it is never too late to install the Rega Univac Central vacuum cleaning system. Suction hoses and suction inlets can be installed simply and conveniently at any time until just before the interior stud walls are paneled over.



Location

Suitable locations of the suction inlets for the vacuum cleaning hose should be selected on the basis of the layout of the house and the intended furniture arrangement. Experience has shown that three suction inlets are usually sufficient.

Suitable locations of the suction inlets are in the centre of the house structure, in halls, in stairwells, etc. The standard vacuum cleaning hose is 10 metres long, but 12-metre lengths are also available. Together with the telescopic tube and nozzle, the theoretical reach of the hose is thus more than 11 metres (or 13 metres) from the suction inlet. The effective reach is naturally dependent on the layout of the house and the furniture arrangement. The top floor of a modern house can often be covered from only one suction socket.



Suction inlets

Two different suction inlet types can be used. Wall-mounted inlets are simplest to install and most convenient to use. If a wall inlet is unsuitable for any reason, a high strength metal floor inlet can be installed. Both types offer the same performance and effectiveness.

Bear in mind that these suction inlets should not be located in places such as behind normally open doors or in areas in which they could be obstructed by furniture. As a result, a suitable location is usually adjacent to a door post.

The suction inlets are attractive and inconspicuous, and can be located in the same manner as conventional electric power sockets. Suction inlets can often be located higher up on the wall, such as on a level with light switches, for improved convenience.

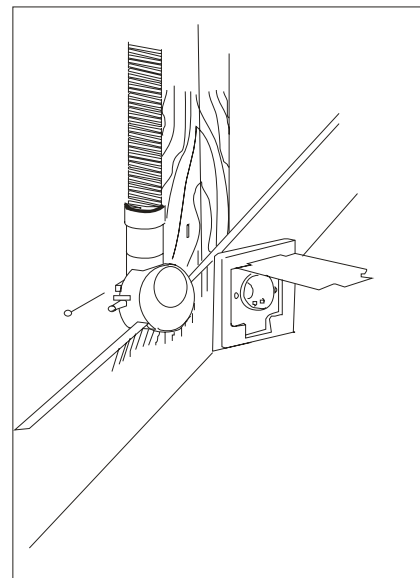
The suction inlets are equipped with hinged, airtight, spring-loaded cover flaps. As a result, the suction inlet cannot inadvertently be left in the open or half-open position.

The suction hose and suction inlet are normally installed inside the wall. This presupposes that the studs are at least 60 mm deep. The suction inlet should always be installed with the connecting hose vertical. On the other hand, it is immaterial whether the suction hose runs upwards or downwards.

The hole in the wall panel should be 74 mm diameter. Use a hole saw to cut a perfectly circular hole. The front edge of the suction socket should project about 10 mm into the wall-facing panel, but should not project beyond the front surface of the panel.

If the suction socket is to be installed through the wall, a special extension tube should be used. The hole through the wall should be 60 mm diameter in order to accommodate the extension tube and the two screw extenders that enable the front and rear sections of the suction socket to be clamped onto the wall.

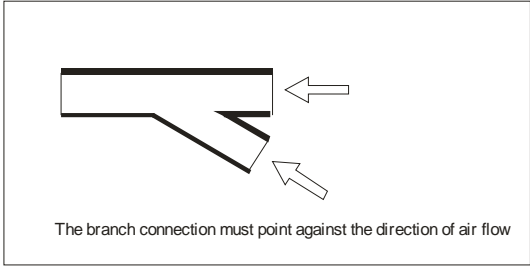
Cut the extension tube and the screw extenders to a length which is suitable for the wall thickness. If the wall is very thick, several extension tubes can be joined together.



Suction Pipework

The permanently installed suction pipework consists of sturdy, flexible PVC hose with spiral reinforcement and a smooth inside surface. This system simplifies installation and minimizes the number of joints. The inside diameter of the hose is 42 mm and the outside diameter is 48 mm. Due to its design, the hose can be bent to a

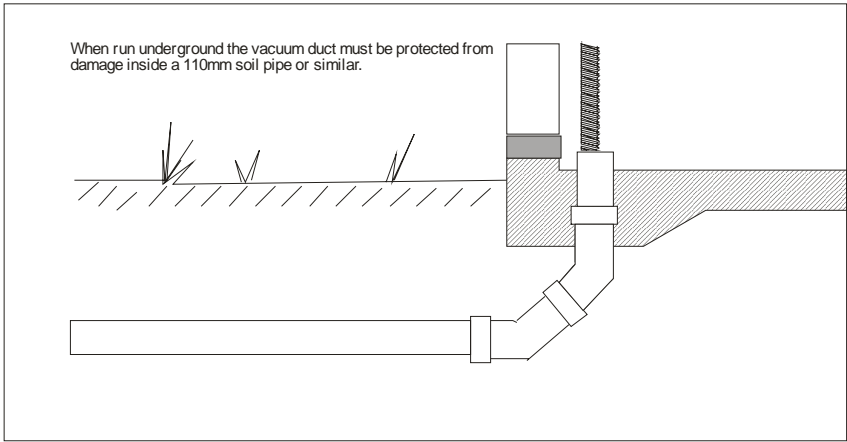
tight radius. However, excessively tight bends should be avoided as far as possible, since the flow will be restricted when the air is deflected through a tight bend. The straighter the hose run, the better the suction effect. If the hose is run horizontally across rafters, for instance, it should be supported by means of a board in order to prevent the hose from sagging between the rafters.



The hose used for the suction pipework is resistant to ageing, moisture and low temperatures. It can therefore be run in outer walls and through un-insulated loft and cellar areas. Due to its sturdy design, the suction hose can even be cast into a floor structure or foundation slab.

The suction inlet should be secured to the stud or noggin piece by means of a 100 mm nail through the integral nail lug. The pipe connection which is not used and which faces towards the stud should be cut. The hose can also be secured with galvanized straps.

If the hose is run in the ground, such as to a separate garage, it should be run inside a 110 mm diameter PVC soil pipe. This will relieve the pressure of the earth on the hose and will protect the hose against possible damage by digging. To facilitate the hose run, the elbows used in the PVC pipe run should not be more than 45 degrees.



Every connection of the hose to a suction socket, branch pipe, etc. should be done by means of a hose branch provided with a special thread to ensure an airtight connection to the hose. Cut the hose so that the cut surface will be as straight as possible.

Use liquid dishwashing detergent, hand cream or the like to lubricate the bore of the larger, internally threaded end of the hose branch. Then thread the branch onto the hose. If the branch is stiff to turn in spite of the lubrication, back it off about one turn, and then continue screwing it on. The hose should go right down into the bottom of the thread to ensure that the connection will be perfectly airtight.

Run the signal cable in parallel with the suction pipework. The signal cable transmits the control signal to the central unit when the vacuum cleaning hose is plugged into the suction inlet. The signal cable can be run in a 16 mm conduit or can be secured to the suction pipework by means of tape or cable ties.

Branch points

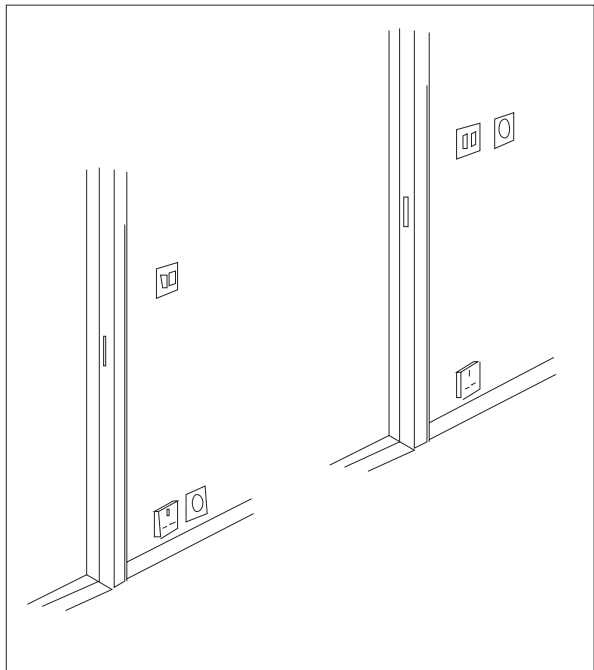
Use the Y-pieces supplied at the points where the suction pipework branches off to the various suction inlets. Remember to connect these correctly.

The "main body" of the Y-piece must be connected to the hose which runs in the direction towards the central unit. If this is not observed, the suction will be substantially reduced.

Central unit

The central unit should be located in an area such as a garage, store room, utility room, attic. When run underground the vacuum duct must be protected from damage inside a 110mm soil pipe or similar, cellar or the like. The best location is on or as close as possible to an outer wall, so that the exhaust air can easily be discharged to atmosphere through a valve or in some other suitable way.

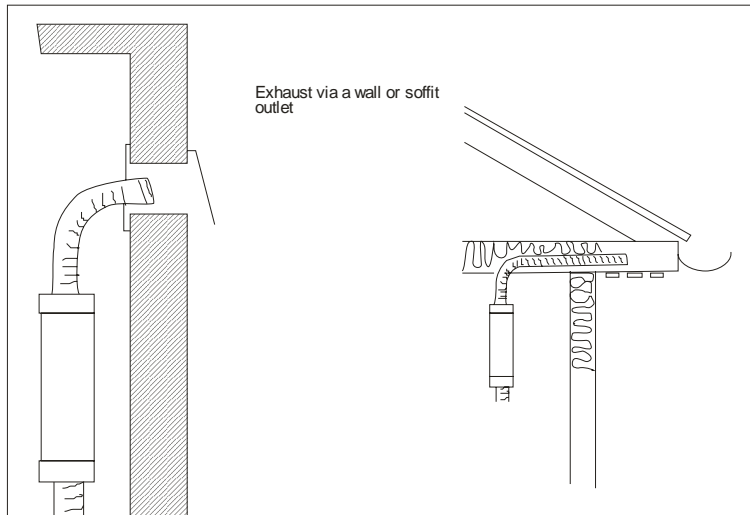
The area in which the central unit is located should be



dry and free from moisture. A mains power socket (230 V ~ 50Hz) supplied across a 10 Amp slow acting fuse should be available in the vicinity of the central unit.
 The front dust bag access of the millennium unit allows for wall or floor mounting allowing the widest possible range of installation options.

Silencer

The silencer should be installed in the exhaust air pipe. The exhaust air pipe should be as short as possible and should not include sharp bends. The silencer can be installed either horizontally or vertically. The exhaust air should be discharged through a wall, the roof or an eaves box.



Signal cable

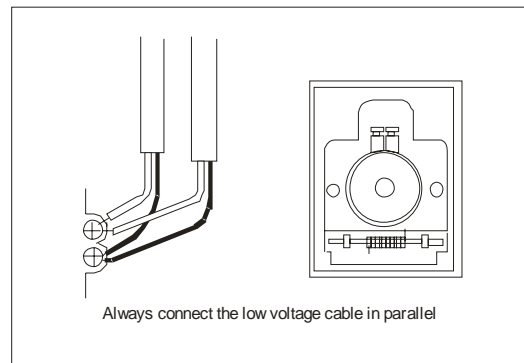
Run a two-core, low-voltage cable along the suction pipework. The cable should be connected in parallel to the contacts in all suction inlets. The cable can either be run in conduit or can be secured to the suction pipework by means of tape or cable ties. Remember to run a double cable from every branch point, or make a correct connection at the Y-piece using terminal blocks. And remember to make the cable sufficiently long so that it will not prevent or render difficult the removal of the suction socket.

Connect the signal cable to the central unit through the outlet on the left-hand side, above the cable for the mains power supply.

Start - stop

When the vacuum cleaning hose is plugged into one of the suction inlets, the circuit will be made between the two contact points on the branch of the suction socket. The cable carrying a safe, low-voltage current (24 volt) which connects to a relay in the central unit. Operation of the cleaning hose mounted on/off switch energizes the relay to remotely start the motor.

When the vacuum cleaning hose is removed after the cleaning work has been completed, the vacuum cleaning motor will not operate making it safe from child tampering.



For further information or assistance please telephone 01767 600499

Rega Univac Central Vacuum Operating Instructions

Thank you for buying a Rega Univac central vacuum cleaner. The Rega Univac Millennium is a brand new vacuum cleaner, developed in Sweden for residential use in all types of new and old houses.

Installation of the Rega Univac Millennium is even simpler. It's rectangular shape, compact size and low sound level make it easy to find a suitable space for the machine. In use the new easy access emptying system simplifies operation.

How it works

Instead of dragging the vacuum cleaner itself all over the house, the suction unit is installed in the cellar, garage, loft or utility room and suction pipes are drawn to strategically placed suction inlets. Two or three inlets are usually sufficient for a normal house.

When you want to vacuum a room you simply connect the hose to the suction point and the machine is ready to operate using the convenient switch mounted on the handle of the vacuum cleaning hose.

Cleaning equipment

Hose including handle with on/off switch and wall connector,

Carpet and floor nozzle

Furniture nozzle

Crevice nozzle

Brush nozzle

Telescopic tube

Suction points

When the hose is plugged into one of the inlets, the unit is activated automatically, ready for control by the on/off switch. After the cleaning work has been completed and the vacuum cleaning hose is removed the unit is deactivated. When the hose switch is turned off the motor continues to operate for a few seconds to clear any dust from the vacuum hose before it is unplugged from the suction point (Millennium model only).

The suction points are equipped with hinged, airtight, spring loaded cover flaps. As a result, the suction point cannot inadvertently be left in the open or half-open position. The vacuum points incorporate low voltage connectors to carry the on/off signal to the central vacuum unit.

Changing of dustbag

The dustbag is easily changed

1. For the Millennium just open the front cover, with the compact drop the dust container by releasing the two toggle clips located on each side of the drum. In each case this will reveal the dust bag.
2. With two hands pull the bag downwards.
3. Make sure there is no dust or dirt remaining inside the unit
4. Replace with a new Rega Univac dustbag and make sure its secure on the pipe
5. **Never use the central vac without the dustbag, this can seriously damage the motor!**

N.B. Do not pick up cigarettes, hot ashes, matches or similar materials. Never use to pick up flammable or combustible liquids such as petrol, or use in areas where they may be present.

For wood shavings or when emptying fireplaces or stoves, always use a Unisep separator in order to protect the system.

Rega Univac Central Vacuum Trouble shooting

Low vacuum

1. Make sure that all inlets are undamaged.
2. Check if something is stuck in the inlet.
3. Is the dustbag undamaged.
4. If the dustbag is full, please change.
5. Make sure that opening, covered with mesh, below the motor is clean.

The motor doesn't start

1. Make sure that the low voltage cable is correctly connected.
2. Check the fuse, 10 Amp, slow acting.
3. Look for a cable breakage on the low voltage cable

The motor doesn't stop

1. Search every connection points on the low voltage cable and make sure there is no short circuit on the cable run.
2. Replace the printed circuit board.

The motor stops

1. Overheating, the machine can be restarted after the automatic overheat protection has re-set. Usually 10 to 15 minutes

Rega Univac Central Vacuum Guarantee

Certificate of Guarantee

All Rega Ventilation central vacuum cleaners, equipment and spare parts are made of high quality materials. The motor and the printed circuit board are guaranteed for 5 years, from the date of purchase, against any defect caused by defective workmanship or material. Should this occur, the product will be repaired free of charge or, if it's necessary, be replaced by Rega Ventilation sales office.

In order to be valid, the certificate must be completed by the retailer on the day of purchase, indicating the date, stamp and signature of the Rega Ventilation dealer.

This document must be kept and in case of a claim it must be given or mailed to a Rega Ventilation dealer or to Rega Ventilation Limited.

Rega Ventilation bears no responsibility for damage to products caused by carelessness, accidents, mishandling, water damage or damage caused by exposure to extreme temperatures.

Damage not covered by this guarantee, can be repaired against payment via your Rega Ventilation dealer.

For future reference please complete the following:

MACHINE NUMBER.....

INSTALLATION DATE.....

Rega Ventilation Limited
21/22 Eldon Way, Biggleswade, Bedfordshire SG18 8NH
Telephone 01767 600499 Fax 01767 600487
E-mail sales@rega-uk.com Web www.regaductex.co.uk